



**Features**

Overall Dimensions installed:  
60"W x 32"D x 74"H

Note: the bottom of the shower must be 2" below the finished floor for the threshold to be level with the finished floor

Gel-coat finish

Flame spread rating of 200 or less and a smoke density rating of 450 or less per ASTM E84

Galvanized steel reinforcing stiffeners

Extra reinforcing in all critical areas

Slip resistant floor

21" x 42" Satin finish stainless steel grab bar vertically mounted, 1 1/2" diameter

Choice of Naugahyde over foam rubber or a hard phenolic folding wheelchair transfer seat factory installed

60" Satin finish stainless steel curtain rod installed

Drain is chrome-plated brass and included with shower strainer. Strainer has 1/4" minimum grate openings and is flush with the floor surface.

Unit is packaged with cardboard box on forklift pallet

Full LTL wooden shipping crate available as option

ADA & Title 24 compliant when equipped as shown and properly installed \*

**Standard, code listings and approvals**

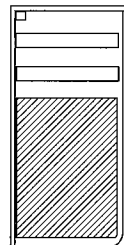
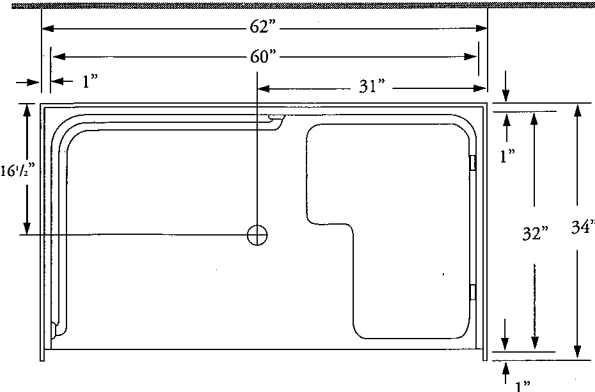
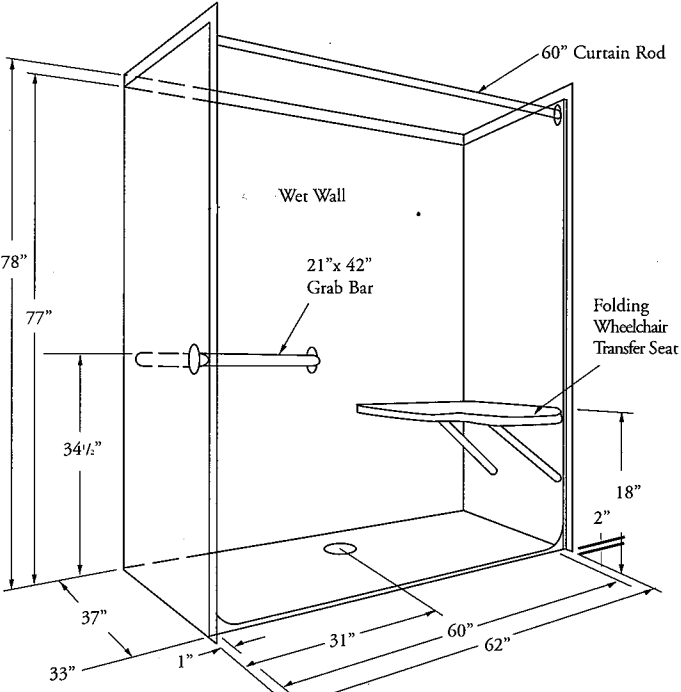
- ANSI-Z124.2 - Standard for Plastic Shower Units
- ANSI-A117.1 - Standard for Building and Facilities Providing Accessibility and Usability for Physically Handicapped People
- ASTM F-446 - Specification for Grab Bars & Accessories installed in the Bathing Area
- ASTM F-462 - Specification for Slip Resistant Bathing Facilities

**Warranty**

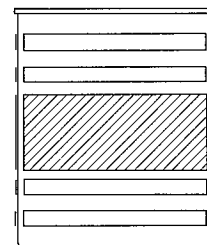
Hydro Systems products are backed by our exclusive 5 year limited warranty.  
(See warranty for complete details)

**Suggested Mechanical Specifications**

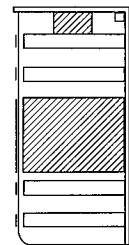
Hydro Systems HS 6032BF shower with 5 year limited warranty, 60" Wide x 32" Deep x 77" High with folding wheelchair transfer seat conforming to ADA accessibility standards, 1" O.D. satin finish stainless steel curtain rod, 21" x 42" satin finish stainless steel grab bar, center sloping integrally molded slip-resistant floor. Units shall be molded of gel-coated fiberglass reinforced polyester resin. Units shall meet or exceed physical and performance requirement for Type 2 gel-coated fixtures [of ANSI Z124.2 showers]. Standing/walking surfaces shall meet slip-resistance requirements of Consumer Safety Specification ASTM F-462, with static friction coefficient no less than 0.04. Handicapped grab bars shall be nom. 1 1/2" O.D. and support a minimum load of 250 lbs. in accordance with the Consumer Safety Specification ASTM F-446 and ANSI A117.1 guidelines. Units shall have a flame spread rating of 200 or less and a smoke density rating of 450 or less per [ASTM E-84]. Units shall bear or have affixed to them a molded manufacturer's identification logo and/or permanent label showing manufacturer's name and model number and the seal of the Uniform Plumbing Code and shall be accompanied by detailed installation recommendations. Also affixed and for removal by the owner/occupant/user only, unit shall be equipped with user maintenance instructions and the full text of the limited warranty. As manufactured by Hydro Systems, Inc. - Simi Valley, California.



Right Side



Back Side



Left Side

Galvanized steel reinforcement and/or wood reinforcement will vary due to application of accessories